

超高頻率液壓振(震)動打拔樁錘 Super high frequency hydraulic vibratory hammer machinery



 MING YANG VIBRATOR CO., LTD. & MING YANG STEEL MACHINE CO.,
 明暘機機械(股)公司 & 明暘企業社
E-mail: mingyang899@gmail.com / Skype: mingyang899 / LINE&WeChat: cf3797
 ADD.: No.61 /55, Sec. 2, Meiliao Rd., Hemei Township, Changhua County 50819, Taiwan
TEL: 886-4-7361-819 FAX: 886-4-7351-238 地址: 台灣508019彰化縣和美鎮美寮路2段55號(61號)
<http://www.mingyang-vibro-hammer.com> & <https://www.mingyangvibrohammer.com/>
<https://mingyang-hammer.weebly.com/> & <http://ming-yang-hammer.sxl.cn/>

明暘機械簡介

明暘機械是位於台灣彰化的高頻液壓振動機專家，在過去十餘年累積了大量的振動機製作與實地應用經驗，可以給予客戶最專業的服務和建議。

從怪手配重、油路配置、手臂設計及製造到針對客戶需求的振動機組合規劃...等等，我們會給予您最適合且易上手操作的機械工具，幫助您更有效率的發展基礎施工，並且同步降低作業期間的環保負擔。除了客製振動機之外，樁板矯正機、鑽孔機組、各類夾座與零件也是明暘專業製造的領域。

我們致力於創造經濟性、操作性、機動性最大化的營造機具給客戶，在全球已有來自不同國家地區的客戶的訂單及肯定，我們期盼與各界朋友一起合作共創佳績！



ABOUT MING YANG

Ming Yang Vibrator Co Ltd (MY) is an expert of manufacturing high frequency hydraulic vibrator. We are located in Changhua, Taiwan. During the past decades, we've gain profound knowledge and experience of the manufacturing and application of the vibrator. We are proud to say that we can provide our client the product with the best quality and the most professional advice. From installing counterweight for excavator, installing hydraulic circuits, designing and producing arms & booms to planning the best combination of vibrator for your working condition, MY provides the all-around service to give you the most suitable equipment and rigs. We help our client speed up the construction progress without compromising quality and also generate minimal noise and ground disturbance at the same time.

Besides customizing vibrators, MY is also professional in producing sheet pile repairing machine, drilling machine, clamps and piling/drilling rigs. We dedicated to create machinery and rigs that generate great value, accessibility and mobility. We've already received orders and great reviews from clients in different areas of the world. We expect to cooperate and create more values in the future with you!



擁有各大品牌改裝合作經驗 Have experience in refitting cooperation with major brands



遍及全球的客戶 Customers all over the world



遍及全世界的液壓振動機

將過去利用電力驅動方式改變為油壓驅動，它可用於振動箱、板樁或是打入與抽出鋼板等工作項目。經由設備對地面的振動，影響土壤粒子間相對的運動。因此物件可以順暢地藉著其本身的重量鑽入或拔離地面。

為了增加工作效率及產能，油液壓振動機的時代已來臨。本機對於初學者來說非常簡單易上手。僅需連接怪手的油壓系統，配上本振動機，即可開始工作，無需外加油壓單元控制，省時又方便。

WORLDWIDE TREND OF HYDRUALIC VIBRATOR

Vibrators nowadays have transferred from electronic driven to hydraulic driven. It can be applied to various working projects such as vibrating, pressing, resonating, pile driving and drilling. The device generate vibration in the adjacent soil particles in order to create relative motion in the ground. Therefore the elements can be smoothly driven down and easily pulled out.

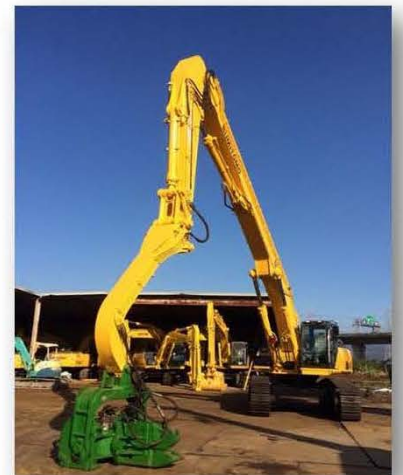
In order to increase the working efficiency and capacity, construction industry has widely applied vibrators in to projects. It' s easy to get started for beginner users. By combining with the hydraulic system of excavator, there' s no need of additional power packs and hydraulic control unit. It saves your time and decreases the complexity of operating.

明暘振動機之特性

- 只需更換夾頭，即能達成不同工作現場的**各種需求**。
- 本振動機之**應用範圍廣闊**，適用鋼板樁、水泥樁、管樁、方樁、H型鋼...等。相較其他系統所需拉力較少且速度較快，且過程中不會傷及物件。
- 採用橡膠墊，大幅**減少噪音及振動**。除了克服環保問題，在建築物附近施工也不會損壞建築物本身。
- 油壓馬達體積小，重量輕，但可輸出高動力及高速度。可以藉由更換幫浦馬達來**適當調整振動頻率**。
- 任何廠牌**之挖土機皆可適用。

FEATURES OF MY VIBRATORS

- With only replacing the applicable rigs, you can accomplish variable projects in construction sites.
- MY vibrator is suitable for sheet piles, cement piles, pipe piles, square piles, H-beams or other customize requests. And the vibration produce little to no pile damage.
- The elasto-plastic cushion reduces noise and ground disturbance. MY vibrator is eco-friendly and suitable in various working conditions such as narrow spaces, urban districts or residential areas.
- The hydraulic motor is small and lightweight. However, it outputs incredible power and speed. And the vibration frequency can be adjusted by changing the pump motor.
- MY' s vibrator is specifically designed to be mounted directly on the stick of all brands of excavators





明暘企業社 MING YANG STEEL MACHINE CO.,
機械(股)公司 MING YANG VIBRATOR CO., LTD.



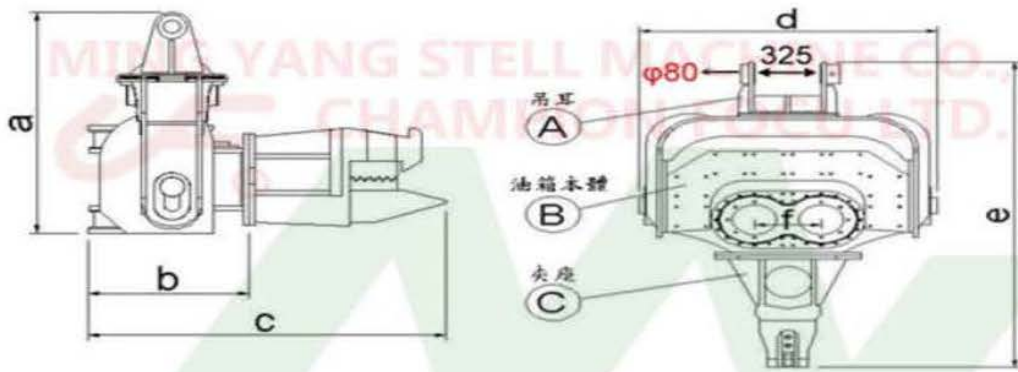
15m

Arm can be customized
手臂可客制化

3m

MY 明暘 MING YANG STEEL MACHINE CO. 企業 CHAMPION FOCUS LTD.	#120A	#250A	#300A	#330A	#350A	#450A	#480A
使用液壓馬達型號 Use hydraulic motor model	#41	#41	#90	#90	#90	#108	#108
頻率 (次數/分鐘) Frequency (Times / min)	2800	2800	3500 CPM	3500	3500	3000	3000
振動力(噸) Vibratory force (TON)	30TON	38TON	45TON	50TON	55TON	65TON以上 ↑	70TON以上 Above
液壓系統操作壓力 Operating pressure of hydraulic system	280BAR	280BAR	300BAR	320BAR	320BAR	320BAR	320BAR
夾嘴油缸夾持力量 Forces in the clamp	35T	40T	40T	45T	45T	45T	50T
夾嘴重量 Weight (Clamp)	600KG	545KG	575KG	575KG	575KG	575KG	670KG
減振墊(橡膠墊)數量 Damping pads (Quantity)	12PCE	12PCE	14PCE	16PCE	20PCE	20PCE	22PCE
整體重量 The whole weight	1400KG	1850KG	2360KG	2450KG	2700KG	2800KG	3100KG
打樁深度(米) Piling depth(Meter)	6 M	8 M	10 M	12 M	16 M	18 M	18 M以上 Above
適用挖機型號 Applicable excavator models	10~16	20~30	30~35	30~40	35~40	40~50	40以上 Above

振機型號 Vibration model	馬達型號 Motor model	排量 Displacement	最高持續速度 Maximum sustained speed	最高間歇速度 Maximum intermittent speed	最大流量 Maximum flow	扭矩 Torque	350BAR 時矩 Moments	最高/最低溫度 Maximum / minimum temperature	持續/高峰最大壓力 Sustained / peak maximum pressure	重量 weight
#250	41MA	41	5600	6200	230	0.65	227	-25/110	400/450	11.5KG
#300-350	90MA	90	4500	5000	378	1.42	497	-25/110	400/450	23.0KG
#450 above	108MA	108.3	4000	4400	435	1.7	595	-25/110	400/450	23.0KG



DIMENSIONS 單位:mm

MY	#120A	#250A	#300A	#330A	#350A	#450A	#480A
a	1160	1315	1332	1351	1500	1500	1605
b	525	653	783	783	800	823	913
c	1250	1600	1730	1727	1770	1770	1860
d	1150	1344	1439	1468	1589	1589	1650
e	1275	2130	2165	2277	2450	2450	2550

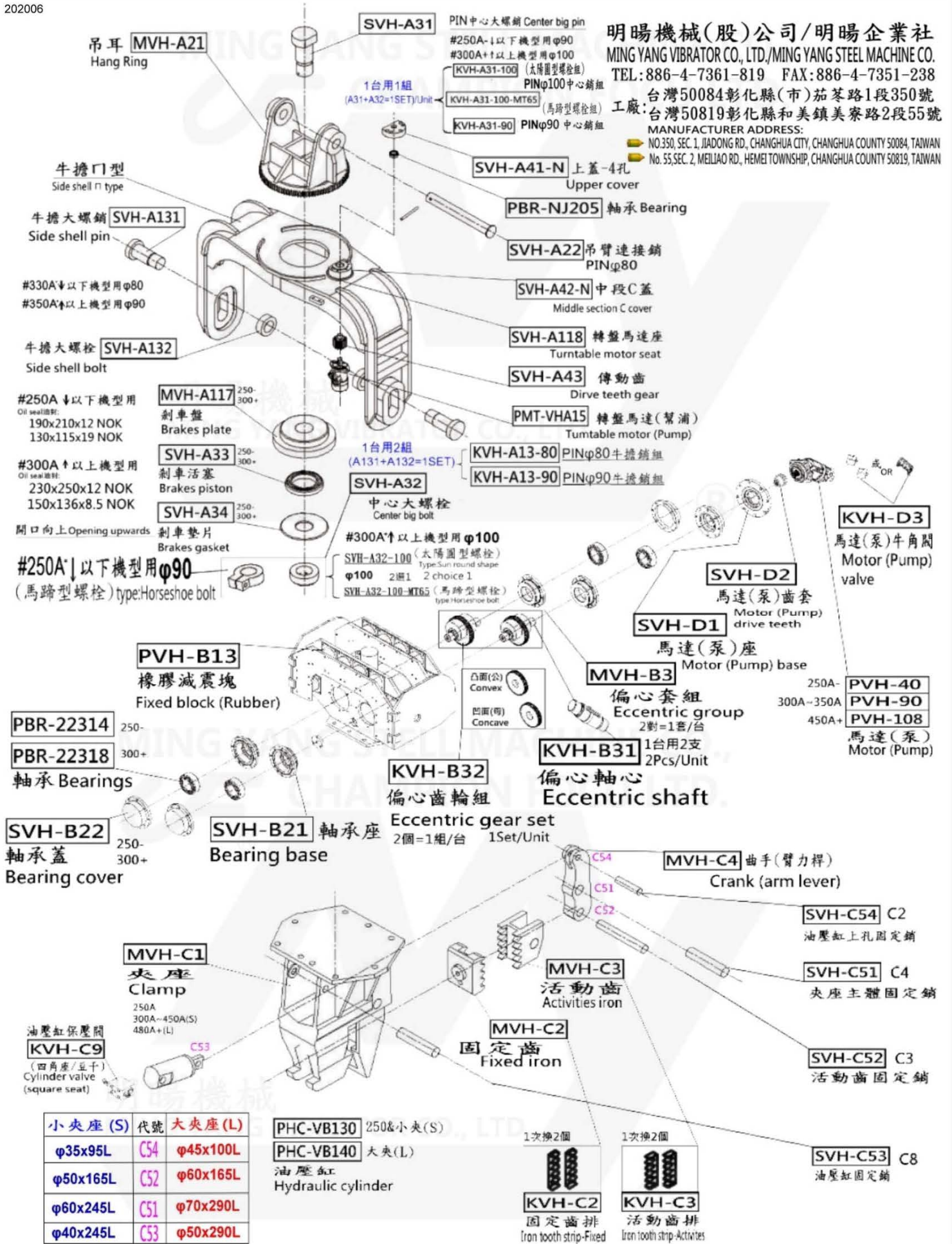
豐富的現場經驗為您客製專屬振機組合

在實際應用振動機設備於土木工程上，明暘已累積大量的專業經驗，能夠針對客戶需求，並提供最廣範圍的振動機種類，機型自200型~450型，離心力自21到超過125噸，藉著不同種類的振動頻率，不論任何施工現場環境條件，均可以被解決。

CUSTOMIZED WITH YEARS OF EXPERIENCE ON SITES

MY has attained profound experience in applying vibrators into all types of civil engineering. We are on standby to advise clients on their specific needs and provide widest scope of pile driving models from model 200 to model 450 with centrifugation from 21 to 125 tons and more. With our customized combination, all the problems of pile driving and extracting could be solved easily.

明暘機械(股)公司/明暘企業社
MING YANG VIBRATOR CO., LTD./MING YANG STEEL MACHINE CO.
 TEL: 886-4-7361-819 FAX: 886-4-7351-238
 台灣50084彰化縣(市)茄荖路1段350號
 工廠: 台灣50819彰化縣和美鎮美寮路2段55號
 MANUFACTURER ADDRESS:
 NO.350, SEC. 1, JIADONG RD., CHANGHUA CITY, CHANGHUA COUNTY 50084, TAIWAN
 No. 55, SEC. 2, MEILIAO RD., HEMEI TOWNSHIP, CHANGHUA COUNTY 50819, TAIWAN



小夾座(S)	代號	大夾座(L)
φ35x95L	C54	φ45x100L
φ50x165L	C52	φ60x165L
φ60x245L	C51	φ70x290L
φ40x245L	C53	φ50x290L

PHC-VB130	250&小夾(S)	1次換2個
PHC-VB140	大夾(L)	1次換2個
油壓缸 Hydraulic cylinder		
KVH-C2	固定齒排 Iron tooth strip-Fixed	
KVH-C3	活動齒排 Iron tooth strip-Activities	

SVH-C54	C2
SVH-C51	C4
SVH-C52	C3
SVH-C53	C8

其他商品 Other Products



Excavator怪手 AIR - I 大臂

AIR - II 二節



AIR - III 副手

MAO無合流閥和其它小配件

No confluence valve and other parts.



砸道搗固機

Tie temper clamp



夾板機

Pile clamp



灌漿頭

Grouting head



太陽能桿用鑽機

Solar drilling Machine

各類夾座 Various clamps



416雙夾

416 double clamp



圓管夾

Tube pile clamp



方管夾

Square pile clamp



套管夾

Casing clamp



偏夾

Sideways clamp



水泥樁夾

Cement pile



Working Field 施工工作圖:

水泥樁夾 Cement pile clamp



圓管夾 Tube pile clamp



砸道搗固機 Tie temper clamp

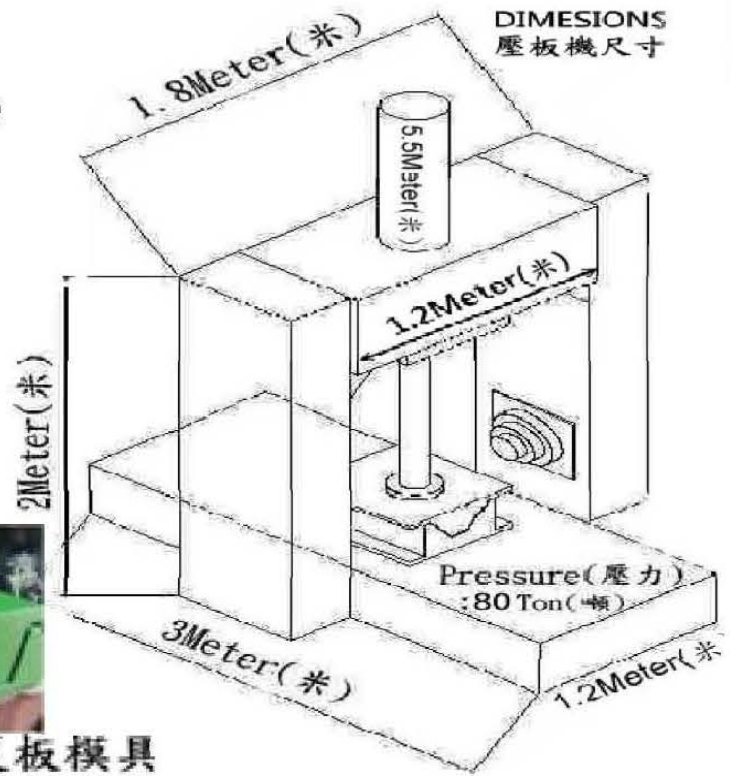


樁板矯正機 (壓板機)

Sheet Pile Repairing Machine

SPECIFICATION 壓板機數據

Hydraulic electric motor 液壓電氣式馬達	10HP
Pressure(Main cylinder) 主缸壓力	70~80TON
Pressure(Side cylinder) 側缸壓力	45~55TON

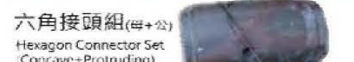
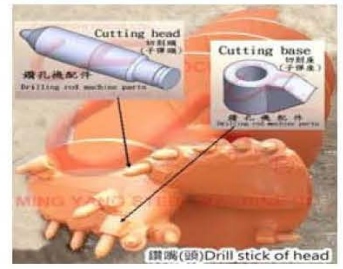


Working Field 施工工作圖:



鑽孔機參數 Drilling Performance Parameter

型號 Model	#200-1803	#400-1803
適用挖機型號 Applicable excavator models	20-30 TON	30-40 TON
Torque (扭力)	210KG/CM ²	280KG/CM ²
Pressure (壓力)	200NMx25	260NMx25
Gear Ratio (變速比)	25:1	25:1
Appearance size (外觀尺寸)	Φ 500 x 200mm	Φ 550 x 200mm
Weight (重量)	1100KG	1390KG
Bracket weight (十字接頭重量)	100KG	110KG
Total weight (總重量)	1200KG	1500KG



Working Field 施工工作圖:



鑽孔機參數 Drilling Performance Parameter

型號 Model	Unit	AD60	AD80	AD150
適用挖機型號 Applicable excavator models	I	2-6T	6-15T	15-20T
扭力 Torque	Nm	1094-4117	2570-996	5307-20998
壓力 Pressure	Bar	80-240	80-240	80-260
流量 Flow	Lpm	25-92	40-150	80-170
轉速 Rotate speed	Rpm	30-68	20-48	15-48
輸出軸 Output shaft	mm	65Rnd	75Sq	75Sq
最大成孔直徑(粘土/頁岩) Max auger diameter (Clay/Slale)	mm	300	800	1100
最大成孔直徑(泥土) Max auger diameter (Earth)	mm	500	1000	1500
重量 Weight	Kg	110KG	115KG	200KG
托架重量 Bracket weight	Kg	35KG	60KG	125KG
組重量 Total weight	Kg	145KG	175KG	325KG



液壓鑽孔機

HYDRAULIC EARTH DRILL (DRILLING ROD MACHINE SET)



MING YANG VIBRATOR CO., LTD. & MING YANG STEEL MACHINE CO.,
明暘機械(股)有限公司 & 明暘企業社

E-mail:mingyang899@gmail.com / Skype:mingyang899 / LINE&WeChat:cf3797

ADD.: No.61 /55, Sec. 2, Meiliao Rd., Hemei Township, Changhua County 50819, Taiwan

TEL:886-4-7361-819 FAX:886-4-7351-238 地址: 台灣508019彰化縣和美鎮美寮路2段55號(61號)

<http://www.mingyang-vibro-hammer.com> & <https://www.mingyangvibrohammer.com/>

<https://mingyang-hammer.weebly.com/> & <http://ming-yang-hammer.sxl.cn/>